

EC EXCEL WIRE SDN. BHD.

**"YOUR INTELLIGENT
CHOICE IN REINFORCEMENT
SOLUTIONS"**





INTRODUCTION

LEADERSHIP MANAGEMENT

EC EXCEL WIRE SDN BHD is a well-established mesh and wire manufacturer and we have over 14 years of experience in Malaysia.

Under excellent and visionary leadership of the management, the company has gained growing reputation as a reliable manufacturer/supplier of quality products and services in Malaysia.

EC EXCEL WIRE SDN BHD has been awarded the ISO 9001 certification in recognition of the quality management system and SIRIM products certification license (MS 145 : 2014) IN 2014. The successful registration under Ministry of Finance Malaysia as an authorized manufacturer/supplier for government projects is also an important milestone for us to move forwards.

After many years of effort, our products are being sold well domestically and enjoy an excellent reputation locally & internationally. We believe that the best way to serve you is to work together with you. We wholeheartedly welcome every interested company from domestic from foreign country to contact us for further detail of our product.



“YOUR INTELLIGENT CHOICE IN REINFORCEMENT SOLUTIONS”

WE DEFINE THE NEED & CREATING INSPIRING
DESIGN SOLUTION.

**“Exceptional product quality; immediate technical and
sales support; dependable on-time delivery”**

YOU CAN EXPECT THE HIGHEST PRODUCT QUALITY, GREATEST VALUE AND UNBEATABLE
SERVICES FROM US.

“Meet your specification, exceed your expectation”

PRODUCE QUALITY PRODUCTS THAT MEET CUSTOMER REQUIREMENTS AND SATISFACTION

WELDED WIRE MESH FOR CONCRETE REINFORCEMENT

WELDED WIRE MESH FOR CONCRETE REINFORCEMENT has been widely used as reinforcement for concrete structures in Malaysia and many developed countries.

EC EXCEL WIRE Welded Wire Mesh is manufactured on automatic welding machines, ensuring uniform spacing of wires and consistent cross-sectional area. The welding is accomplished by an electronically controlled electrical process employing the principle of fusion combined with pressure, which actually fuses at the cross-section wire into a homogeneous section without loss of strength.

All steel fabric manufactured in compliance with MALAYSIA STANDARD MS 145 are of the highest quality where stringent quality control are imposed to ensure consistency and reliability.

ADVANTAGES:-

- Higher bond and anchorage characteristics of its ribbed wire.
- Ribbed wire is cold-rolled produced which provide more consistent properties and better ductility.
- Crack widths in concrete elements are controlled to the minimum because force is well distributed through bond effect of ribbed wire as compared to plain wire.
- Quicker placement and installation.

TECHNICAL SPECIFICATION:-

- MALAYSIA STANDARD MS145:2014 on steel welded mesh for the reinforcement on concrete.
- Characteristic tensile strength is 485N/mm²
- Minimum average shear value in Newton shall not be less than 0.5 of yield strength multiplied by the area of the larger diameter wire.

CUSTOMIZED WELDED WIRE MESH

- We offer customized wider range of Steel Wire Welded Mesh to match closely with customers' needs.
- We possess the right degree of ductility to allow it to be bent, shaped or fashioned readily on the job yet is sufficiently rigid to maintain its shape after bending.

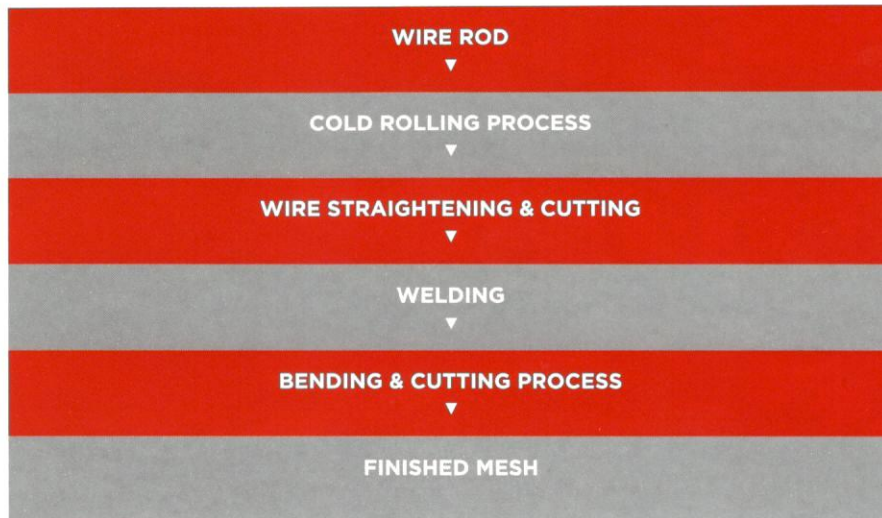
SPECIAL FABRICS:-

- Able to provide the designer / detailer of specifying optimum steel area requirement in both direction.

ADVANTAGES:-

- Shorten the construction time.
- Less wastage and less steel usage.
- Easy handling.
- Adaptive
- High & consistent quality.
- Enhance anchorage and crack control.

THE PRODUCTION PROCESS



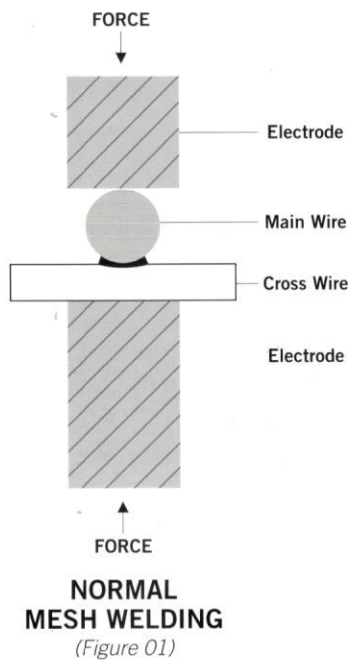
TECHNICAL DETAILS

LAPPING DETAILS

Tension lap length should at least be equal to the design tension anchorage length necessary to develop the required stress in the reinforcement

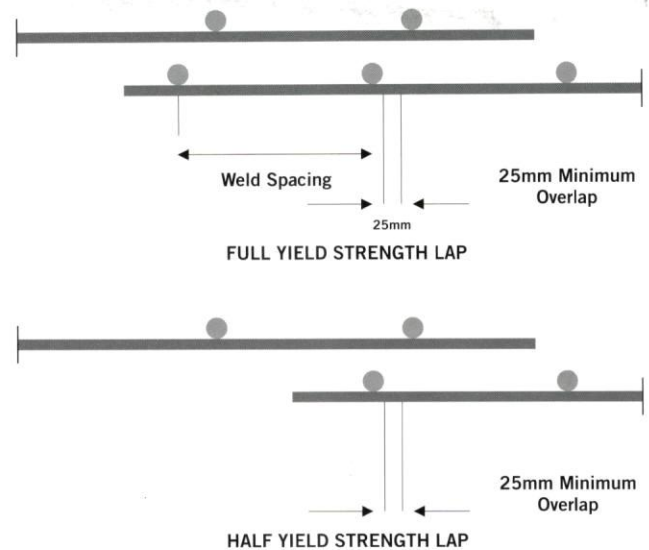
To achieve full yielding strength in side laps, the WELDED WIRE MESH must be overlapped by two cross welds with an addition of at least 25mm wide. To achieve half yielding strength, the WELDED WIRE MESH must be overlapped by one weld with an additional of at least 25mm wide.

** Full yield strength lap should always be provided when lap length is not specified.



BENDING

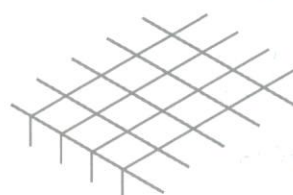
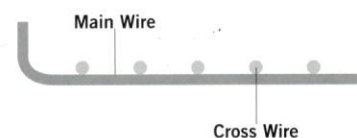
End anchorage in the form of hooks and bends should only be used to meet specific design requirement. **EC EXCEL WIRE WELDED WIRE MESH** can also be bent in accordance to the required size and shape.



ANCHORAGE & WELD

EC EXCEL WIRE fabric is manufactured with automatic welding machines to develop a weld shear stress of 250 N/mm². This weld is achieved under controlled by combination of pressure, electric current and time to develop a fusion of wire without reducing the tensile properties of wire.

Once Fabric is embedded in concrete, the anchorage of the fabric necessary to develop tensile stress within the wire is achieved by the embedded of the cross wire. With the weld shear stress referred to above, one weld will achieve at least half of the specified characteristic yield stress of the wire. Hence the bond between the wire surface and the concrete can be regarded as additional anchorage and the tensile stresses can be developed in short length than those required by smooth bars. An embedded of two weld will develop at least the yield strength of the wire.



SINGLE BEND



DOUBLE BEND

SPECIFICATION OF STEEL MESH FOR CONCRETE REINFORCEMENT

TYPE A	Square Fabric	200MM X 200MM spacing
TYPE B	Rectangular Fabric	100MM Main Wire, 200MM Cross Wire
TYPE C	Long Fabric	100MM Main Wire, 400MM Cross Wire
TYPE D	Small Square Fabric	100MM X 100MM spacing

FABRIC	Malaysia Standard Ref. No.	Main		Cross Wire		Steel Area (mm ² /m)		Nominal Mass Per
REF:		Diameter (mm)	Spacing (mm)	Diameter (mm)	Spacing (mm)	Main	Cross	Square Meter (kg / m ²)

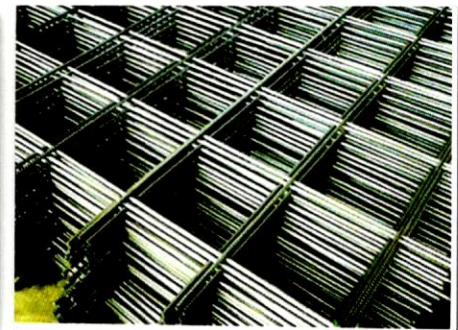
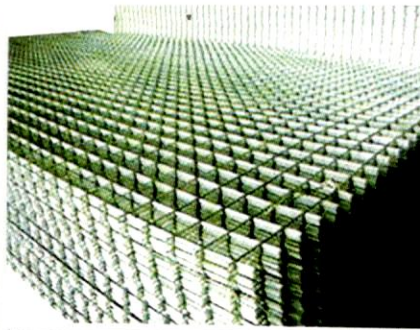
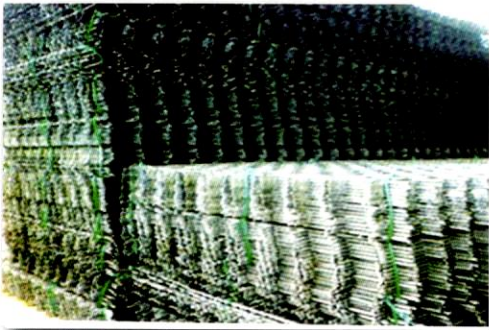
SQUARE MESH

A 12	A565	12	200	12	200	565	565	8.88
A 11	A475	11	200	11	200	475	475	7.46
A 10	A393	10	200	10	200	393	393	6.16
A 9	A318	9	200	9	200	318	318	4.99
A 8	A252	8	200	8	200	252	252	3.95
A 7	A193	7	200	7	200	193	193	3.02
A 6	A142	6	200	6	200	142	142	2.22
A 5	A98	5	200	5	200	98	98	1.54
A 4	A63	4	200	4	200	63	63	0.99

RECTANGULAR MESH

B 12	B1131	12	100	8	200	1131	252	10.9
B 11	B950	11	100	8	200	950	252	9.44
B 10	B785	10	100	8	200	785	252	8.14
B 9	B636	9	100	8	200	636	252	6.97
B 8	B503	8	100	8	200	503	252	5.93
B 7	B385	7	100	7	200	385	193	4.53
B 6	B283	6	100	7	200	283	193	3.73
B 5	B196	5	100	7	200	196	193	3.05

WELDED STEEL WIRE MESH (BRC) / REINFORCEMENT WIRE MESH



- Conformed with MS 145:2014 standard
- Steel Reinforcement material
- Used to replacing the traditional "Cut & Bend" and placing of steel thermo-mechanical treated bars
- offer better strength, integration and longer work time compared with other wire mesh products
- Mesh in an electric fusion welded prefabricated reinforcement consisting of a series of parallel longitudinal; wires with accurate spacing welded to cross wires at the required spacing.
- Better anchorage & crack control
- Able transfer strength & bond strength
- Any kinds of specification are decided by customer's requirement (Cut-To-Size / Bending are available)

FABRIC	Malaysia Standard Ref. No.	Main		Cross Wire		Steel Area (mm ² /m)		Nominal Mass Per
REF:		Diameter (mm)	Spacing (mm)	Diameter (mm)	Spacing (mm)	Main	Cross	Square Meter (kg / m ²)

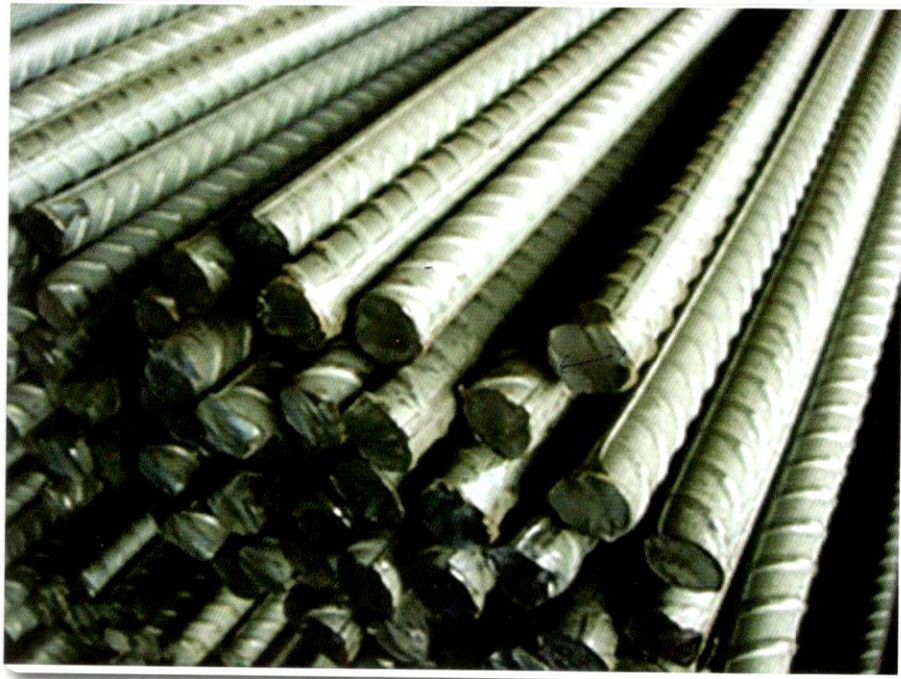
SQUARE MESH

C 12	C1131	12	100	8	400	1131	126	9.87
C 11	C950	11	100	8	400	950	126	8.44
C 10	C785	10	100	6	400	785	71	6.72
C 9	C636	9	100	6	400	636	71	5.55
C 8	C503	8	100	5	400	503	49	4.34
C 7	C385	7	100	5	400	385	49	3.41
C 6	C283	6	100	5	400	283	49	2.61
C 5	C196	5	100	5	400	196	49	1.93

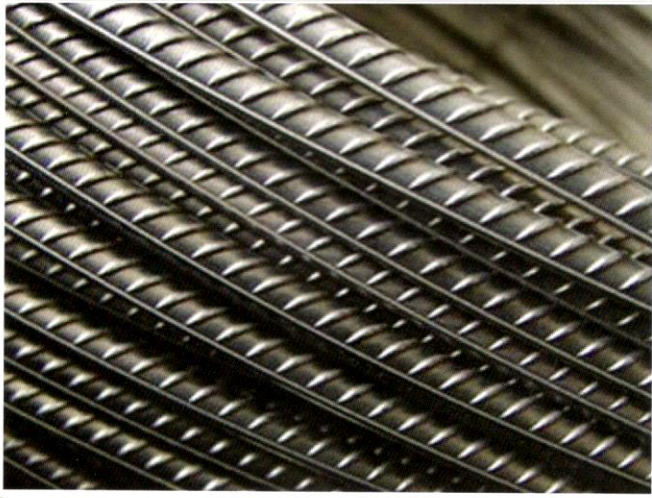
RECTANGULAR MESH

DA 12	DA1131	12	100	12	100	1131	1131	17.76
DA 11	DA950	11	100	11	100	950	950	14.91
DA 10	DA785	10	100	10	100	785	785	12.32
DA 9	DA636	9	100	9	100	636	636	9.98
DA 8	DA503	8	100	8	100	503	503	7.90
DA 7	DA385	7	100	7	100	385	385	6.04
DA 6	DA283	6	100	6	100	283	283	4.44
DA 5	DA196	5	100	5	100	196	196	3.08

STEEL BAR



- Conformed to MS 145:2014 & BS 4449 : 1998
- Hot rolled deformed/plain round steel bars for the reinforcement of concrete (BS Steel Bar)
- The cast-in-place concrete "body" and shop-fabricated steel "musculature" of reinforcing car will work in tandem to create one of the most durable and most economical composite materials
- Widely used for building, bridges, highway and runways, construction and etc
- Available in various common sizes
- Any kinds of specification are decided by customer's requirement (Cut-To-Size available)



- Available in various sizes
- Premium steel grade
- JIS standard
- Wire gauge SWG 8 ~ SWG 18
- Drawn wire type
- Applicable in manufacturing
- Can be special use for cold heading steel





CERTIFICATE

SIRIM QAS International Sdn. Bhd. has issued an IQNet recognized certificate that the organization:

EC EXCEL WIRE SDN. BHD.
LOT 77A, LORONG GEBENG 1/7
GEBENG INDUSTRIAL ESTATE
26080 KUANTAN
PAHANG DARUL MAKMUR
MALAYSIA

has implemented and maintains a

QUALITY MANAGEMENT SYSTEM

for the following scope:

MANUFACTURE OF STEEL WIRE MESH (BRC).

which fulfils the requirements of the following standard:

ISO 9001 : 2015

Issued on : **13 September 2018**

First issued on : **22 October 2015**

Expires on : **21 October 2021**

This attestation is directly linked to the IQNet Partner's original certificate and shall not be used as a stand-alone document

Registration Number : **MY – QMS 02950**



Alex Stoichitoiu
Alex Stoichitoiu
President of IQNet

Mohd Azanuddin Saleh
Mohd Azanuddin Saleh
Managing Director
SIRIM QAS International

IQNet Partners*
AENOR Spain AFNOR Certification France APCER Portugal CCC Cyprus CIB
CQC China CQM China CQS Czech Republic Cro Cert Croatia DQS Holding GmbH Germany
FONONORMA Venezuela ICONTEC Colombia Inspecta Sertifiointi Oy Finland INTE
IRAM Argentina JQA Japan KFK Korea MIRTEC Greece MSZT Hungary Nemko AS Norway
NYCE-SICE Mexico PCBC Poland Quality Austria Austria RIR Russia SII Israel SIQ
SIRIM QAS International Malaysia SGS Switzerland SRAC Romania TEST St Petersburg Russia
IQNet is represented in the USA by: AFNOR Certification, CIBQ, DQS Holding GmbH

* The list of IQNet partners is valid at the time of issue of this certificate. Updated information is available



No Lesen : **PC000487**
Licence No :

LESEN PENSIJILAN BARANGAN

Product Certification Licence



SIRIM QAS International Sdn. Bhd. dengan ini menganugerahkan kepada
SIRIM QAS International Sdn. Bhd. hereby grants to

EC EXCEL WIRE SDN. BHD.
LOT 77A & 77B, LORONG GEBENG 1/7
GEBENG INDUSTRIAL ESTATE
26080 KUANTAN
PAHANG, MALAYSIA

Lesen untuk menggunakan Tanda Pensijilan di atas barangan
a licence to use the Certification Mark on

WELDED STEEL FABRIC FOR THE REINFORCEMENT OF CONCRETE

Please refer to detail in the **SCHEDULE**

sebagai mematuhi keperluan
as complying with
MS 145 : 2014

Mohd Azanuddin bin Salleh
Mohd Azanuddin bin Salleh
Pengarah Urusan
Managing Director
SIRIM QAS International Sdn. Bhd.



SIRIM QAS International Sdn. Bhd.
(No. Syarikat 410334-K)
1, Persiaran Dato' Menteri
Selayang 2, Peti Surat 1035
40700 Shah Alam
Selangor Darul Ehsan
MALAYSIA

Tel : 60-3-55446400
Faks : 60-3-55446488
<http://www.sirim.my>
<http://www.malaysian-certified.my>

Tarikh Mula Pensijilan : **11 January 2013**
Certified Since
Sah Sehingga : **11 January 2020**
Valid Until

Tarikh Dikeluarkan : **31 December 2018**
Issue Date
No Siri : **034968**
Serial No

Lesen ini dianugerahkan tertakluk kepada syarat-syarat Perjanjian Pensijilan Barangan SIRIM QAS International Sdn. Bhd.
This Licence is granted subject to the provisions of the Product Certification Agreement of SIRIM QAS International Sdn. Bhd.



CERTIFICATE



SIRIM QAS International hereby certifies that

EC EXCEL WIRE SDN. BHD.
LOT 77A, LORONG GEBENG 1/7
GEBENG INDUSTRIAL ESTATE
26080 KUANTAN
PAHANG DARUL MAKMUR
MALAYSIA



has implemented a Quality Management System complying with

ISO 9001 : 2015

QUALITY MANAGEMENT SYSTEMS - Requirements



Scope of Certification

MANUFACTURE OF STEEL WIRE MESH (BRC).



SIRIM QAS International Sdn. Bhd.
(Company No. 490234-S)
1, Persiaran Dato' Menteri
Section 2, P.O. Box 7035
40100 Shah Alam
Selangor Darul Ehsan
MALAYSIA
Tel: 60-3-5544 6404
Fax: 60-3-5544 6787
<http://www.sirim-qas.com.my>
<http://www.malaysiancertified.com.my>


Mohd Azanuddin Salleh
Managing Director
SIRIM QAS International Sdn. Bhd.

This certificate is granted subject to the terms and conditions as stated in the Certification Agreement.



No. Perakuan : **A 004020**

PERAKUAN PEMATUHAN STANDARD (BAHAN BINAAN)

Adalah dengan ini Pengilang/Pengeluar yang dinyatakan di bawah ini telah mengeluarkan bahan binaan yang diperakui oleh Lembaga mengikut Bahagian VIIA Akta Lembaga Pembangunan Industri Pembinaan Malaysia (Pindaan 2011). Perakuan ini adalah tertakluk kepada syarat-syarat yang telah ditetapkan. Perakuan ini mengesahkan bahawa bahan atau produk binaan yang dinyatakan di bawah telah diperakui.

No. Pendaftaran : 1151228PH0075
Nama Pengilang / Pengeluar : EC EXCEL WIRE SDN BHD
Alamat Kilang Berdaftar : LOT 77A & 77B, LORONG GEBENG 1/7
GEBENG INDUSTRIAL ESTATE
26080 KUANTAN
PAHANG

Kategori dan Jenis produk bahan binaan :
(Rujuk Lampiran A untuk butiran terperinci)

IRON AND STEEL PRODUCTS
- Welded Steel Fabric for the Reinforcement Concrete

Tarikh Mula Berkuatkuasa : 08-03-2019
Tarikh Tamat Tempoh Perakuan : 07-03-2020

Perakuan ini hendaklah diperbaharui seawat-lewatnya 30 hari sebelum tarikh tamat tempoh perakuan.

Nota: Perakuan dikeluarkan setelah Lembaga menjalankan pemeriksaan dan pengesahan ke atas kilang dan produk-produk yang terkandung di dalam Pensijilan Produk (Product Certification) yang dikeluarkan oleh Badan Pensijilan yang diiktiraf. Pihak pengeluar/pengilang adalah bertanggungjawab untuk memastikan Pensijilan Produk (Product Certificate) sentiasa dalam tempoh sah laku.


SAIN BIN SAIDI
PENGARAH
CIDB NEGERI PAHANG
b.p Ketua Eksekutif



STEEL BAR



www.ecexcel.com.my



Conformed to MS 146:2006

Hot rolled deformed/plain round steel bars
for the reinforcement of concrete (BS Steel Bar)

Widely used for building, bridges,
highway and runways, construction and etc

Available in various common sizes

Any kinds of specification are decided
by customer's requirement
(Cut-To-Size available)



HARD DRAWN WIRE

Available in various sizes

Premium steel grade

JIS standard

Wire gauge SWG 6 ~ SWG 18

Drawn wire type

Application in manufacturing

Can be special use for

cold heading steel



RAZOR / CONCERTINA BARBED TAPE



www.ecexcel.com.my

A kind of modern with high security fencing materials

Fabricated with razor-sharp steel blade and high-tensile wire.

Ideally used in the protection of garden apartment, government agency, jail, sentry, frontier defense etc.



Blade Style	Thickness	Wire Dia	Barb Length	Barb Width	Barb Spacing
	0.5±0.05	2.5±0.1	22±1	15±1	34±1

Barbed Tape External Diameter (mm)	Length Per Roll (m)	No. of Spiral Turn per coil	Clips per 2 Spiral Turn	Barbed Tape Thickness (mm)	Internal Line Wire Diameter (mm)
500	8	56	5	0.5	2.5
700	10	56	5	0.5	2.5
1000	15	56	5	0.5	2.5



www.ecexcel.com.my

ANTI CLIMB FENCE PANEL

Designed to bring superior protection, good visibility and appealing architectural design
The small spacing increase security – discourage cutting and climbing
Suitable for premises that require high-security perimeter protection



Army Camp



Gated Security



Prison

APPLICATION



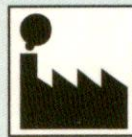
Airport



Train



Harbour



Industrial



Highway



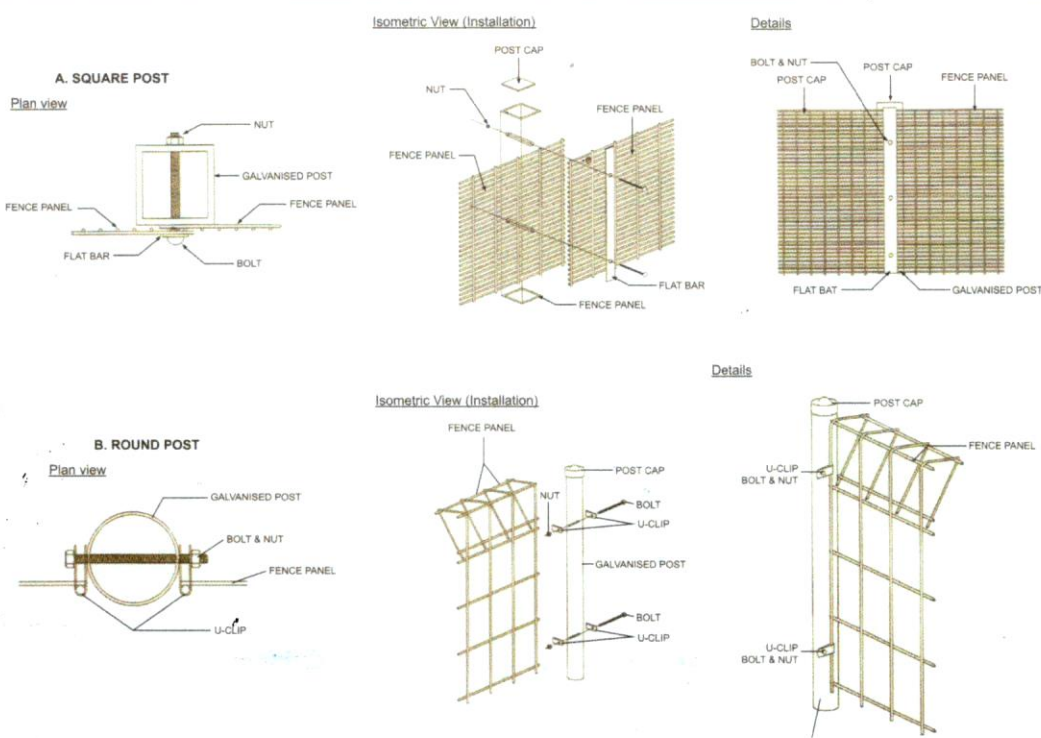
Walkway



EC EXCEL ANTI CLIMB FENCE MODEL	HEIGHT OF FENCE	WIDTH OF FENCE	MESH SPACING	FENCE DIAMETER
ECAC 1200	1.2m	2.4m	12.5mm x 75mm 25mm x 75mm	4mm
ECAC 1500	1.5m			
ECAC 1800	1.8m			
ECAC 2100	2.1m			
ECAC 2400	2.4m			
ECAC 2700	2.7m			
ECAC 3000	3m			



INSTALLATION

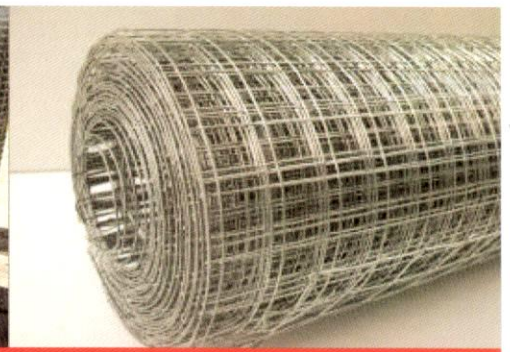
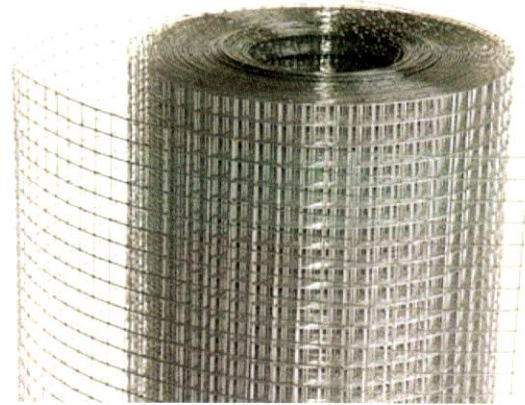


GALVANIZED WIRE MESH

- Made of quality of low carbon steel wire using fully automated welding equipment
- Surface of the mesh has undergone anti-corrosion treatment
- Widely used in industry, agriculture, construction, transportation, mining, animal cages and etc
- Any kinds of specification are decided by customer's requirement (Cut-To-Size available)

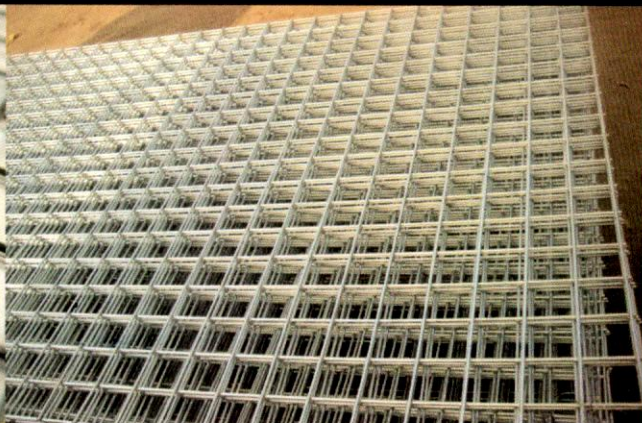
ROLL FORM

Ref. No.	Wire Diameter	Height	Length
EC 610	2.0 - 2.5	6' (1.8m)	20m
EC 65	3.3 - 4.5		
EC 66	2.6 - 3.2		



SHEET FORM

Ref. No.	Wire Diameter	Wire Spacing (W x H)	Height	Length
2210	2.6mm	2" x 2" (50mm x 50mm)	6' (1.8m)	10' (3m)
2211	2.1mm			
2208	3.2mm			



www.ecexcel.com.my



www.ecexcel.com.my



EC EXCEL WeldFence Model	HEIGHT OF FENCE	WIDTH OF FENCE	STEEL WIRE DIAMETER	MESH SPACING		POST LENGTH (60mm DIA CHS)
				VERTICAL	HORIZONTAL	
ECWF 1200 A	1.2m	2.4m	4-6mm	50mm	150mm	1500mm
ECWF 1500 A	1.5m					2000mm
ECWF 1800 A	1.8m					2400mm
ECWF 2100 A	2.1m					2700mm
ECWF 2400 A	2.4m					3000mm



EC EXCEL WeldFence



www.ecexcel.com.my

DURABILITY

Through GALFAN WIRE technology, EC EXCEL WeldFence has increased life span and resistance against corrosion from air, moisture and sunshine.

STRENGTH

EC EXCEL WeldFence is made of high tensile strength GALFAN WIRE, Electrically resistance Welded together to provide strong mesh panel.

ELEGANCE

EC EXCEL WeldFence is designed to simple geometry, neat designs and aesthetically harmonious with any enviroment.

RIGIDITY

EC EXCEL Welded Fence Panel has been "rolled" into a wedge at the top and bottom with the latest anticorrosive methods to improve the rigidity of the fence panel.

LOW MAINTENANCE

Low maintenance needed with resistance to deformation of EC EXCEL welded fence panel. Lasting protection against rust and corrosion .

EASY INSTALLATION

EC EXCEL Mesh Panel and Fence Panel come complete with matching predrilled fence posts and panel clips, can be easily installed / ready for quick installation.

VARIATION

EC EXCEL WeldFence has varies of fencing choices to meet customers needs.

APPLICATION

- Gated communities , Residential Housing Area & condominium.
- School, University & Hospitals
- Immigrations & airport terminal
- Military base, prisons
- Factories, warehouse & industrial sites
- Golf courses, sport stadium & race track

WHAT IS GALFAN WIRE ?

- Wide range of value-added wire by products
- Alloy of Zinc – Aluminium
- Presence of Aluminium in the GALFAN WIRE coating leads to an adherent aluminium oxide layer formed on the surface.
- This protective aluminium oxide layer slows down the reaction of the zinc in the alloy and increases the lifespan of Galfan wire considerably.

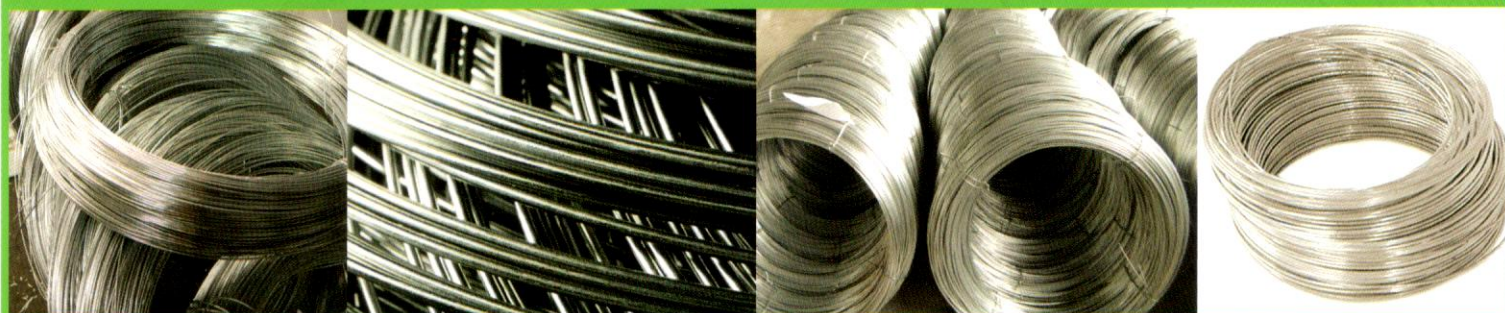


Galvanized wire

WIRE GAUGE	LENGTH	FT
SWG 12	18M	60'
SWG 10	15M	50'
SWG 8	12M	40'
SWG 6	9M	30'

GALVANIZED / GI WIRE

- Shiny silver in colour
- Designed to prevent rusting
- Solid, durable and extremely versatile
- Widely used by landscapers, manufacturers and contractors



PVC WIRE

- Manufactured with quality iron wire
- Most popular plastic for coating wires
- Relatively low in cost, resilient fire retardant and possesses good insulating properties
- Water resistance and anti rust
- Available in green, blue, black and grey colour

PVC wire

WIRE GAUGE	LENGTH	FT
SWG 12	30.5M	100'
SWG 10	24M	80'
SWG 8	18.3M	60'
SWG 6	12.2M	40'



BARBED WIRE

- Type of fencing wire constructed with sharp edges or points arranged at intervals along the strands.
- Used to construct inexpensive fences and is used atop walls surrounding secured property
- It is simple to construct and quick to erect, even by an unskilled person
- Available in various sizes

PVC Barbed wire

PACKING	LENGTH	FT
6KG	55M	180
7KG	64M	210
8KG	73M	240
9KG	83M	270
10KG	92M	300

Galvanized Barbed wire

PACKING	LENGTH	FT
6KG	46M	150
7KG	54M	175
8KG	61M	200
9KG	69M	225
10KG	76M	250



CHAIN LINK FENCING

well suitable for a wide range of application such as fencing for sports field, river banks, construction and residence, animal fencing and so on.

Assortment available: galvanized iron wire & PVC coated wire mesh
(available in green, blue and orange color)

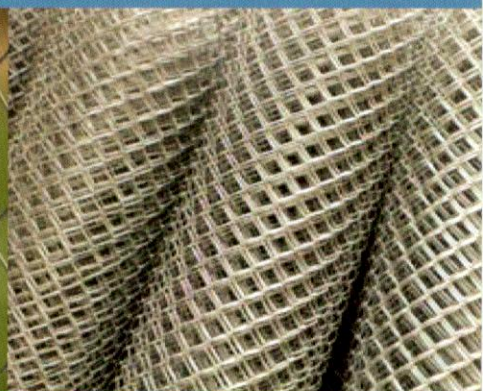
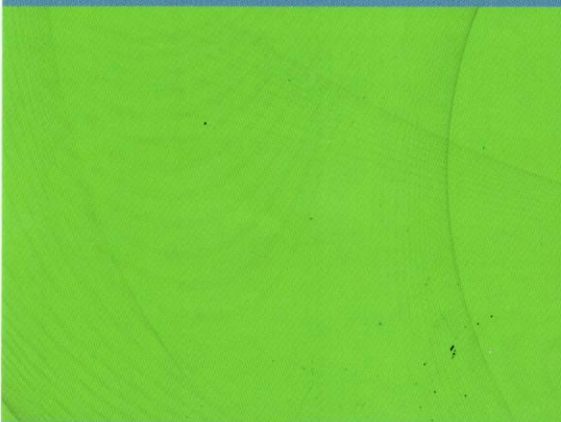
Any kinds of specification are decided by customer's requirement (Cut-To-Size available)

Chainlink Fencing PVC GALVANIZED

Height		Spacing	Length	Colors
Feet	Meter			
3'	0.9	2" / 2½" / 2⅝" / 3"	40'	Green (Standard) Blue / Orange (Special)
4'	1.2			
5'	1.5			
6'	1.8			
7'	2.1			
8'	2.4			



PVC Chainlink Fencing



GI Chainlink Fencing



www.ecexcel.com.my

Project References



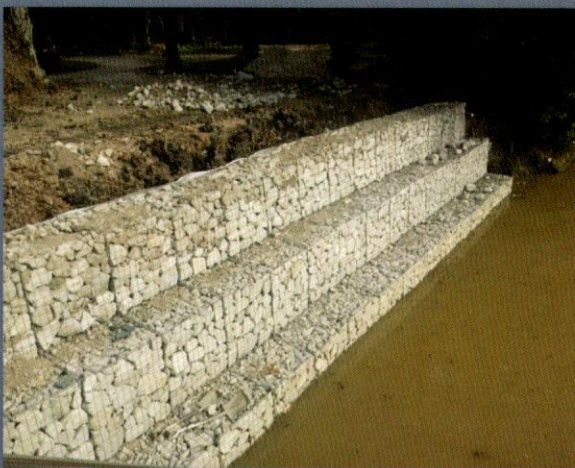
www.ecexcel.com.my



JKR BERA



**JKR SEMANGAT
JOHOR**



**JPS HULU LANGAT
SITE TAMAN DESA IMPIAN**



JPS KLUANG



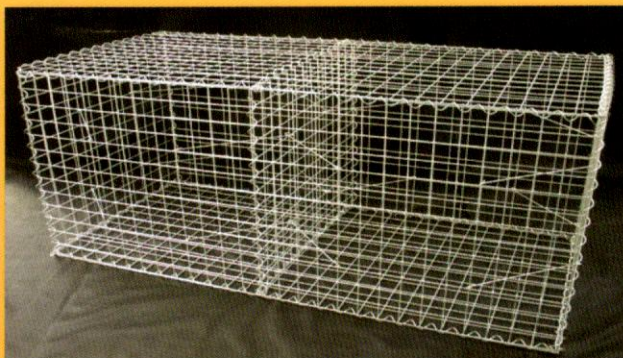
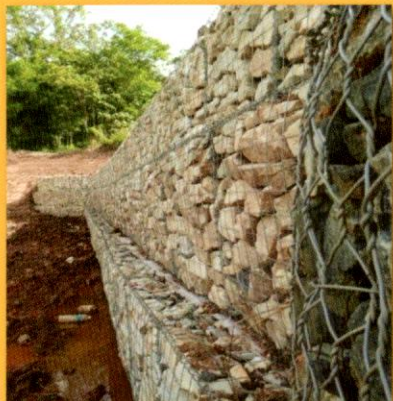
**JKR KL
SJK(T) SG. BESI**

InnoGal Gabion

The innovation of InnoGal Wire with added value of galvanized wire
The coating layer consists of 95% of zinc and 5% of aluminium.
Ductile and withstands heavy deformation.



www.ecexcel.com.my



Advantages

Durability	4x times resistance higher than zinc galvanized wire
Strength	The tensile strength is 40% higher than zinc galvanized wire
Rigidity	Provided ultimate interlink rigid structure
Finishing	Firm and aesthetics finishing
Cost	Handling easier, installation faster, cost effective
Formability	Improved, Increased and adequate formability and heavy deformation
Environmental Friendly	No need post treatment which harmful to environment

Particular	Data
Mesh Spacing	8cm x 8cm (standard) / custom make
Nominal wire diameter	± 3.0mm - 6.0mm
Composition For Steel	0.10% Carbon Maximum
Type of Coating	Zinc 95% + Aluminium 5%
Wire Tensile Strength	650 - 800 MPA
Weld Shear Strength	55% - 70% of Wire Tensile

